



norament round & hammered

nora[®]
by Interface[®]

norament® round & hammered

norament round and hammered's versatile style and reputation for lasting durability are sure to hit the mark regardless of tomorrow's trends. From corridors and stairwells to the high-traffic public spaces of museums, sky bridges or airports, they offer high performance in two restrained designs – one retro, one contemporary – and are united by a crisp, solid color palette worthy of a classic.

As the longest running design in the nora portfolio, norament round has brought timeless structure to interior floors for decades. It features a disciplined matrix of circular pastilles that contrasts the more randomly forged surface of norament hammered.

Both are available in 14 colors - including light to dark neutrals and muted accents. And with 11 colors available in coordinating norament stairtreads, both designs can be carried onto a high-performance surface for your stairs.



PRODUCT NORAMENT HAMMERED **COLORS** 0702 BLACK, 0884 DUST GREY
PRODUCT NORAMENT 825 ROUND **COLOR** 5341 MAIZE **INSTALLED** DIRECTIONAL





STAIR PRODUCT NORAMENT HAMMERED STAIRTREADS **COLOR** 0716 SLATE GREY
FLOORING PRODUCT NORAMENT HAMMERED **COLORS** 0749 STONE GREY, 0882 PLATINUM GREY **INSTALLED** DIRECTIONAL

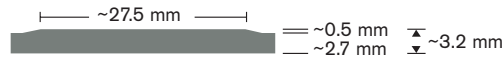
Specifications

norament round tiles are monochrome with a classic round pastille surface for use in heavy traffic areas. Choose from a range of warm and cool neutrals or light to dark muted accent colors.

norament 825 round

Art. 1902  14

□ ~19.72" x 19.72" (501 mm x 501 mm)



Product Construction	Homogeneous Rubber Tile
Class / ASTM F1344	Type IA and Grade 1
Surface Type	Round Pastille
Indoor Air Quality	GREENGUARD Gold
Full Life Cycle Carbon Emissions	CDPH 01350 Compliant
LEED v4	Carbon Neutral Floors™
	Contributes to IEQ credits

 Contact your sales representative or visit nora.com for QuickShip options.

Installation Method



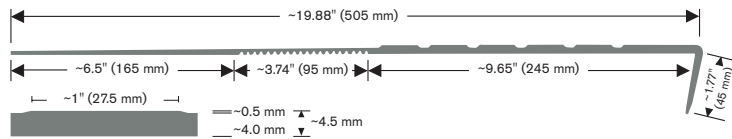
norament® round stairtreads

 11

Art. 465 - width ~50.59" (1285 mm)

Art. 466 - width ~63.54" (1614 mm)

Art. 467 - width ~78.89" (2004 mm)



norament® 825 round Colorline



5336 RHINO



0884 DUST GREY



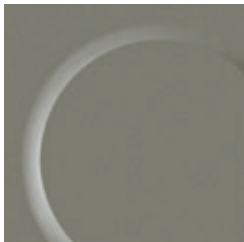
5337 ASH



0702 BLACK



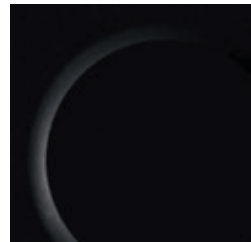
0007 ALUMINUM



0882 PLATINUM GREY



0749 STONE GREY



0716 SLATE GREY



2070 SAGE



5343 EVERGREEN



0319 SLATE BLUE



0733 STEEL BLUE



5338 BISCUIT

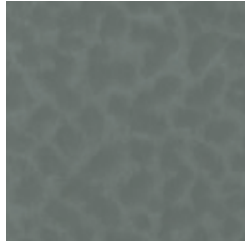


5341 MAIZE

norament® hammered Colorline



5336 RHINO



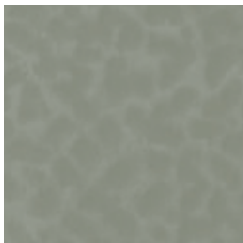
0884 DUST GREY



5337 ASH



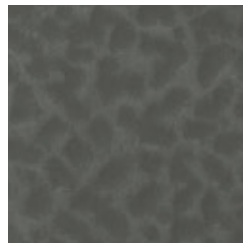
0702 BLACK



0007 ALUMINUM



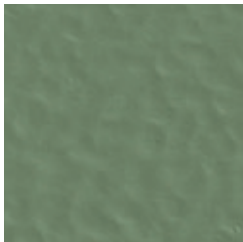
0882 PLATINUM GREY



0749 STONE GREY



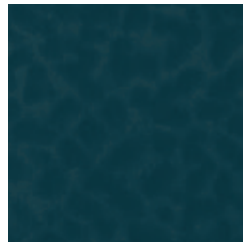
0716 SLATE GREY



2070 SAGE



5343 EVERGREEN



0319 SLATE BLUE



0733 STEEL BLUE



5338 BISCUIT



5341 MAIZE

Specifications

norament hammered tiles are monochrome with a hammered surface for use in heavy traffic areas. Choose from a range of warm and cool neutrals or light to dark muted accent colors.

norament hammered

Art. 1910  14

□ ~19.76" x 19.76" (502 mm x 502 mm)



Product Construction	Homogeneous Rubber Tile
Class / ASTM F1344	Type IA and Grade 1
Surface Type	Hammered
Indoor Air Quality	GREENGUARD Gold CDPH 01350 Compliant
Full Life Cycle Carbon Emissions	Carbon Neutral Floors™
LEED v4	Contributes to IEQ credits

 Contact your sales representative or visit nora.com for QuickShip options.

Installation Method



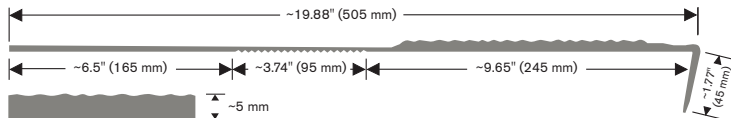
norament® hammered stairtreads

 11

Art. 479 - width ~50.59" (1285 mm)

Art. 468 - width ~63.54" (1614 mm)

Art. 469 - width ~78.89" (2004 mm)





Why nora® rubber flooring?



Reduced Maintenance

Little more than water needed - no finishes, coatings or harsh chemicals necessary.



Quiet Acoustical Performance

Attenuate noise pollution.



Durable Surface

Withstand extreme stress from heavy rolling loads and wheeled traffic.



Ergonomic Design

Add comfort underfoot, reducing foot and leg pain.



Superior Slip Resistance

Help to create safer spaces.



Supports Infection Control

Disinfect completely due to a dense, non-porous surface.



Cradle to Cradle Silver*

Certification of whether a product is safe, circular and responsibly made.



Carbon Neutral Floors™

Third party verified carbon neutral throughout its entire life cycle as part of Interface's Carbon Neutral Floors program. Learn more at interface.com/carbonneutral



GREENGUARD Gold

Certified low VOC emissions.

*Applies to norament round and hammered stairtreads.
Not available for norament 825 round and hammered floor tiles.

Product warranty

We will be happy to supply specific test results on all nora systems, Inc. products.

nora® by Interface®

Product Warranty – Americas (Excerpt)

nora systems, Inc. (nora) warrants the following nora® brand products (collectively, the "Warranted nora Brand Flooring Products") as set forth below: norament® and noraplan® rubber flooring, norament rubber stairtread (excluding visually impaired strips), accessories (excluding visually impaired strips), nora® nTx™ 020 bond enhancer and adhesives, and the conductivity of its Electrostatic Dissipative ("ESD") flooring system (norament ed and noraplan ed flooring and adhesive).

This limited warranty and the applicable Installation Instructions and Maintenance Guidelines are subject to change at nora's discretion and without notice. Please contact nora or visit the nora.com website for the latest versions. For additional information regarding usage in recommended applications, please refer to www.nora.com or call 1-800-332-NORA. Warranty periods commence on the date of invoice of the product to the original end-use customer.

Integrated system

nora and Interface cover every area of your building – all from a single source. Create harmonious, space-specific design with our system of soft and resilient floor coverings, including special floorings, stairtreads and accessories.

Outstanding service

From design to post-installation, we have the experts to support your project at every step and can even be a valued resource for your organization's sustainability mission.

For additional information regarding usage in recommended applications, contact us or visit nora.com.

ORDER SAMPLES

Online at www.nora.com
Call 1.800.332.NORA
Email your sales rep or customer support specialist

BROWSE NORA.COM

- Design your floor with Interior Design Studio
- Find technical and environmental documents
- Access BIM/Revit Files



RECYCLED
Paper made from
recycled material
FSC® C009723



PLEASE RECYCLE

Printed on 100% post consumer waste (PCW)
fiber manufactured using wind power.

Errors as well as misprints and changes reserved. No guarantee is given for the accuracy and completeness of the information. The product images in this document may differ from the original. This document is not a contractual offer and only serves to provide non-binding information.

The nora brand and all other registered trademarks used in this document are registered to nora systems GmbH or its affiliates or subsidiaries. Other labels used here are trademarks of their respective owners.

nora systems, Inc.
9 Northeastern Blvd.
Salem, NH 03079
T: 800.332.NORA
T: 603.894.1021
info-us@nora.com
www.nora.com